

Aetna Medicare Advantage

A high-quality, sustainable and cost-effective retiree solution

Health care is the number one concern for people over the age of 65.¹ Research shows that 40% of the Medicare population faces three or more chronic conditions requiring support.² That's why it's important that retirees receive the support they need in their benefit program.

When Parts A and B are integrated into one plan, it's known as a Medicare Advantage plan, or Part C. Adding Part D makes it a Medicare Advantage with Prescription Drug (MAPD) plan. In an MAPD plan, physician, hospital and drug coverage are all covered under one holistic plan. These plans are administered by private insurers, like Aetna.

These plans are required to cover everything Medicare covers. But since they're privatized, they can be customized to offer benefits far greater than traditional Medicare. To be eligible for a Medicare Advantage plan, retirees need to be enrolled in Parts A and B, and continue to pay their Part B premium.

By migrating to our Medicare Advantage retiree solution, plan sponsors can experience a tailored approach with high-quality plans, financial sustainability and improved health outcomes.

A simple, supportive and cost-effective approach

Simplicity	One ID card, one integrated medical and drug plan and one monthly EOB for each
Support	Comprehensive, high touch member service and care management experience
Savings	Predictable, lower costs than most current plans, plus savings for plan sponsors

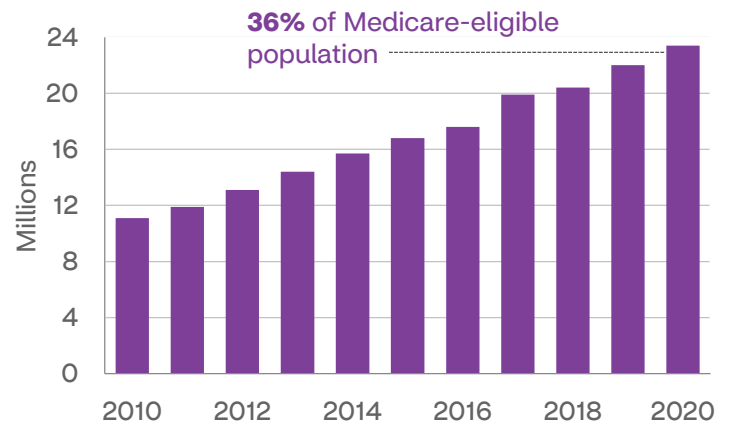
1 Merrill Lynch., Finances in Retirement: New Challenges, New Solutions, 2017.
2 Urban Institute and Kaiser Family Foundation analysis, 2012.
3 CMS Medicare Advantage enrollment files, January 2020.

4 Avalere Health, "Medicare Advantage Achieves Cost-Effective Care and Better Outcomes for Beneficiaries with Chronic Conditions Relative to Fee-for-Service Medicare", July 2018.



GROWING AND IMPROVING

National Medicare Advantage annual growth³



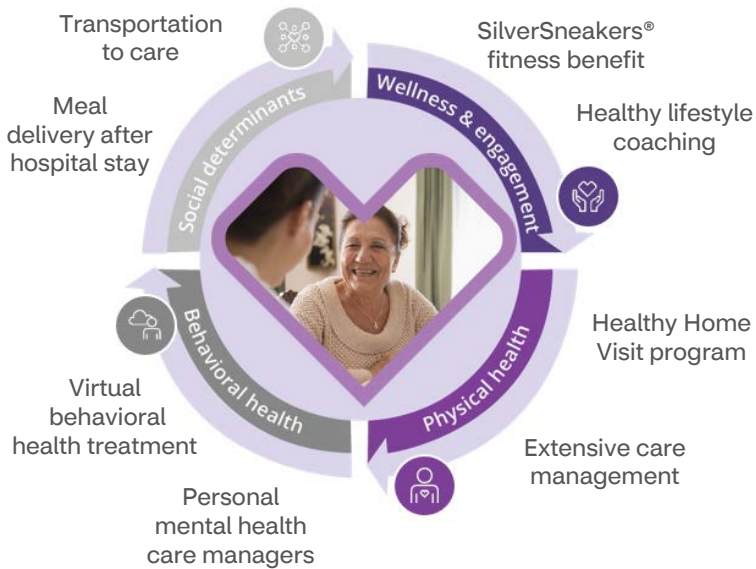
23M+ people have chosen a Medicare Advantage plan³

Patients enrolled in a Medicare Advantage plan had **better health outcomes** than retirees enrolled in traditional Medicare⁴

33% fewer emergency room visits⁴
29% reduction in avoidable hospital stays⁴

Holistic, integrated care management

With an Aetna Medicare Advantage plan, we offer a complete and fully integrated care management approach. We've carefully designed our care management and clinical advocacy support programs to provide a complete view of members that includes an end-to-end, whole health perspective. Our programs are designed to support the total health of retirees, making a positive difference in their health journey.



4.5 stars

Our national Medicare Advantage plan star rating from CMS⁵

Comprehensive, better benefits with quality ratings

Unlike other Medicare plans, the Centers for Medicare and Medicaid Services (CMS) carefully rate Medicare Advantage plans to ensure that members receive high-quality health care. Star ratings are a holistic evaluation of quality – they measure how we help keep our retirees healthy and ensure they get the care they need. This includes evaluations of:

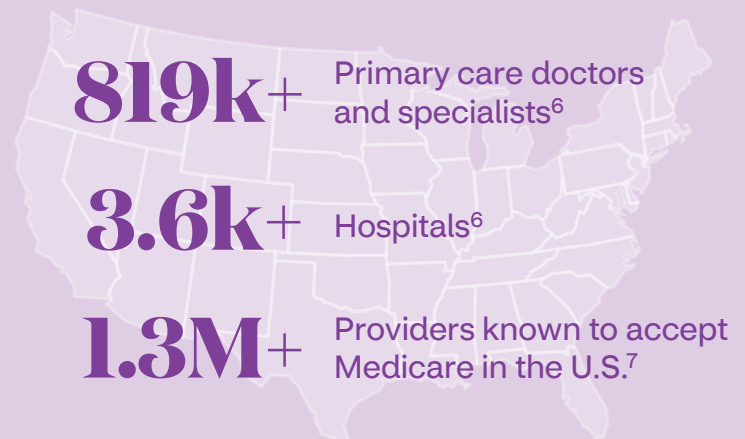
- Tests, screenings and vaccines
- Survey measures including CAHPS (member satisfaction) and health outcomes
- Quality improvement and operational measures
- Appeals and complaints, readmissions and other key evaluation points



COVERAGE IN OR OUT OF NETWORK

We've built strategic provider collaborations across our PPO and HMO Medicare Advantage networks. And we're focused on value-based contracting and risk-sharing arrangements since these lead to the greatest quality of care for our members, while also reducing costs.

Our unique Medicare Advantage PPO ESA (extended service area) program provides members the same level of benefits, whether they use in-network providers or out-of-network providers.



We are focused on **efficient cost management, performance improvement** and **access to quality care**. We ensure our members have access to the **broadest choice** and highest quality providers possible.

⁵ Based on 2020 Star ratings data published by CMS on October 11, 2019. Medicare evaluates plans based on a 5 Star rating system. Star ratings are calculated each year and may change from one year to the next. Our overall Part C and Part D rating is 4.5.

⁶ The Aetna Medicare Advantage PPO network as of September 30, 2019.

⁷ CMS Fast Facts sheet (February 2020) cms.gov/research-statistics-data-and-systems/statistics-trends-and-reports/cms-fast-facts.